

**Teknik Rapor No / Technical Report No:
S-1256-2258-02 HK**

<i>Client:</i>	Doraks Teknolojik Ürünler San. Ve Tic. Ltd. Şti.
<i>Manufacturing Location:</i>	Doraks Teknolojik Ürünler San. Ve Tic. Ltd. Şti. Küçükbakkalköy Mahallesi, Kayışdağı Cad. Ozan Veysel Sok. No:9/1 K.Bakkalköy, 34750 Ataşehir/İstanbul
<i>Test Sample :</i>	Portable socket-outlets
<i>Testing Location</i>	Emitel TR Ltd. Şti MTK Sitesi 5746 / 13 Sok. No:12 Çamdibi / Bornova / İzmir / Türkiye
<i>Test Standard:</i>	IEC 60884-1:2013; EN 60695-11-5:2017
<i>Purpose of Testing:</i>	Custom Testing.
<i>Date of Receipt of Test Item</i>	03.07.2018
<i>Date(s) of performance of tests</i>	13.07.2018 – 20.07.2018
<i>Results:</i>	The sample product passes applied tests, see report below.
<i>Date of issue :</i>	19-09-2018
<i>Sonuçlarla ilgili açıklamalar / Explanations of the test case verdicts</i>	Test case does not apply : N/A Test object does meet the requirement: P Test object does not meet the requirement: F

This technical report can only be quoted as the whole part. It must be certified officially for all advertising purposes. This report is the result of only the tested sample and not a general assessment for the serial manufacturing products.

Teknik Rapor Numarası.:S-1256-2258-02 HK

emitel TR, MTK Sitesi 5746/13 Sok. No:12 Camdibi Bornova 35090 İzmir / Türkiye
Tel.: +90 (232) 433 3190 Fax: +90 (232) 433 3290

emTR_F510_00_Rev2_0 Date of release / Yayım tarihi: 19-09-2012 Author / Yazar: Filiz Sezer
Page / Sayfa: 1 / 16

CONTENTS

1 Identification of the Test Sample

1.1 Function

1.2 Technical info

2 Evaluations

3 Comments

Attachment 1: Photo Documentation

Attachment 2: Equipment of Measurements

Teknik Rapor Numarası.:S-1256-2258-02 HK

emitel TR, MTK Sitesi 5746/13 Sok. No:12 Camdibi Bornova 35090 Izmir / Turkiye
Tel.: +90 (232) 433 3190 Fax: +90 (232) 433 3290

emTR_F510_00_Rev2_0 Date of release / Yayim tarihi: 19-09-2012 Author / Yazar: Filiz Sezer
Page / Sayfa: 2 / 16

1 Identification of the Test Sample

1.1 Function

The product is a rewirable portable socket outlet accessory with a plug, a supply cord and a circuit breaker.

It varies according to number of socket outlets over the products. It might have 3, 6, 9, 12 or 15 socket outlets.

1.2 Technical Info

<i>Product:</i>	Socket outlet accessory
<i>Model name:</i>	DR-7951-6S
<i>Serial Number:</i>	---
<i>Working voltage:</i>	220V
<i>Rated Frequency:</i>	---
<i>Rated Current:</i>	16A
<i>Protection Class:</i>	Class I

2 Evaluations

Applied tests and inspections are listed below:
According to IEC 60884-1:

- Resistance to humidity (Cl. 16.3)
- Insulation resistance test (Cl. 17.1)
- Electric strength test (Cl. 17.2)
- Temperature rise (Cl. 19.3)
- Ball pressure test (Cl. 25.2)
- Glow-wire test (Cl. 28.1.1)

According to EN 60695-11-5:

- Needle flame test

Teknik Rapor Numarası.:S-1256-2258-02 HK

emitel TR, MTK Sitesi 5746/13 Sok. No:12 Camdibi Bornova 35090 Izmir / Turkiye
Tel.: +90 (232) 433 3190 Fax: +90 (232) 433 3290

emTR_F510_00_Rev2_0 Date of release / Yayim tarihi: 19-09-2012 Author / Yazar: Filiz Sezer
Page / Sayfa: 3 / 16

16.3	TABLE: Resistance to humidity			P
Object / Part No. / Material/ DUT		Time (h)	Temperature (°C)	Humidity
12 socket outlet and 9 socket outlet		48	25	%93

17.1	TABLE: Insulation resistance test			P
Points where the test voltage is applied between		R (MΩ)	Required R (MΩ)	
LN short circuit - PE		273	5	
LN short circuit – Metal enclosure corner		999,9	5	
Between L-N		836	5	
Note: Test voltage is 500 VDC. Insulation resistance and electric strength tests were performed after humidity.				

17.2	TABLE: Electric Strength Test			P
Points where the test voltage is applied between		Voltage (VAC)	Breakdown / Puncture (Yes/No)	
LN short circuit - PE		2000 V	No	
LN short circuit – Metal corner		2000 V	No	
Between L-N		2000 V	No	
Note: Insulation resistance and electric strength tests were performed after humidity.				

Teknik Rapor Numarası.:S-1256-2258-02 HK

emitel TR, MTK Sitesi 5746/13 Sok. No:12 Camdibi Bornova 35090 Izmir / Turkiye
Tel.: +90 (232) 433 3190 Fax: +90 (232) 433 3290

emTR_F510_00_Rev2_0 Date of release / Yayim tarihi: 19-09-2012 Author / Yazar: Filiz Sezer
Page / Sayfa: 4 / 16

19.3	TABLE: Temperature rise						P
	Test 1			Test 2			
Ambient temperature(°C)	25,1			25,1			
Temperature (°C) of part	Max. Temperature(°C)	Temp. Rise (K)	Rise Limit (K)	Max. temperature(°C)	Temp. Rise (K)	Rise Limit (K)	
Circuit breaker enclosure	30,3	5,2	45	27,65	2,55	45	
Left metal surface	27,6	2,5	45	29,15	4,05	45	
Right metal surface	26,7	1,6	45	29,0	3,9	45	
Supply cord	30,9	5,8	45	41,3	16,2	45	
Plug	---	---	---	24,25	-0,85	45	

Note: Test 1: Supply current is 16A.
Test 2: Supply current is 20A, circuit breaker is short circuited.

25.2	TABLE: Ball Pressure Test		P
Allowed impression diameter (mm)	<2		—
Object/ Part No./ Material	Test temperature (°C)	Impression diameter (mm)	
Plastic surfaces	125	1	

28.1.1	TABLE: Glow wire tests			P
Object/ Part No./ Material	Glow wire test (GWT); (°C)		Verdict	
	750			
	t _e	t _i		
Plastic material	30	0	P	

Note: t_i: Time between starting of the test and inflammation
t_e: Time between starting of the test and end of inflammation
t_a: Duration of applying glow wire (30 s.)
Compliance:
t_e ≤ t_a + 30.

--	TABLE: Needle flame test (EN 60695-11-5)	P
----	--	---

Teknik Rapor Numarası.:S-1256-2258-02 HK

emitel TR, MTK Sitesi 5746/13 Sok. No:12 Camdibi Bornova 35090 Izmir / Turkiye
Tel.: +90 (232) 433 3190 Fax: +90 (232) 433 3290

emTR_F510_00_Rev2_0 Date of release / Yayim tarihi: 19-09-2012 Author / Yazar: Filiz Sezer
Page / Sayfa: 5 / 16

Object/ Part No./ Material	Needle Flame Height (mm)	t _a (s) Applying Time	Number of samples	t _b (s)	Flame on dripping surface	Verdict
Plastic material	12	10	3	0	No	P
<p>Note: t_b: Time between removing needle flame and end of inflammation over the sample if occurs. t_a: Duration of applying needle flame (5sn, 10sn, 20sn, 30sn, 60sn, 120sn)</p> <p>Compliance: t_b ≤ 30 No ignition over dripping surface.</p>						

3 Comments

The sample product passes the applied tests detailed in section 2.

Other models declared by the manufacturer with identical electrical and mechanical features:

DR-7951-3S 3 Socket outlet, 1,5 Mtr Cable 19" 1U Rack Type. Socket Module
 DR-7951-3A 3 Socket outlet, On/Off Switch 1,5 Mtr Cable 19" 1U Rack Type. Socket Module
 DR-7951-3F 3 Socket outlet, 16A Circuit Breaker, 1,5 Mtr Cable 19" 1U Rack Type. Socket Module
 DR-7951-6S 6 Socket outlet, 1,5 Mtr Cable 19" 1U Rack Type. Socket Module
 DR-7951-6A 6 Socket outlet, On/Off Switch 1,5 Mtr Cable 19" 1U Rack Type. Socket Module
 DR-7951-6F 6 Socket outlet, 16A Circuit Breaker, 1,5 Mtr Cable 19" 1U Rack Type. Socket Module
 DR-7951-9S 9 Socket outlet, 1,5 Mtr Cable 19" 1U Rack Type. Socket Module
 DR-7951-9A 9 Socket outlet, On/Off Switch 1,5 Mtr Cable 19" 1U Rack Type. Socket Module
 DR-7951-9F 9 Socket outlet, 16A Circuit Breaker, 1,5 Mtr Cable 19" 1U Rack Type. Socket Module
 DR-7951-12F 12 Socket outlet, 16A Circuit Breaker, 1,5 Mtr Cable 19" 1U Rack Type. Socket Module
 DR-7951-15F 15 Socket outlet, 16A Circuit Breaker, 1,5 Mtr Cable 19" 1U Rack Type. Socket Module
 DR-7951-6FU 9 Socket outlet, UPS Type 16A Circuit Breaker 1,5 Mtr Cable 19" 1U Rack Type. Socket Module
 DR-7951-9FU 9 Socket outlet, UPS Type 16A Circuit Breaker 1,5 Mtr Cable 19" 1U Rack Type. Socket Module

Teknik Rapor Numarası.:S-1256-2258-02 HK

emitel TR, MTK Sitesi 5746/13 Sok. No:12 Camdibi Bornova 35090 Izmir / Turkiye
 Tel.: +90 (232) 433 3190 Fax: +90 (232) 433 3290

emTR_F510_00_Rev2_0 Date of release / Yayim tarihi: 19-09-2012 Author / Yazar: Filiz Sezer
 Page / Sayfa: 6 / 16

-emitel TR-

<i>Prepared by Arda EKER</i>	<i>Approved by Anil EKER</i>

ATTACHMENT 1: Photo Documentation



12 socket outlet

Teknik Rapor Numarası.:S-1256-2258-02 HK

emitel TR, MTK Sitesi 5746/13 Sok. No:12 Camdibi Bornova 35090 Izmir / Turkiye
Tel.: +90 (232) 433 3190 Fax: +90 (232) 433 3290

emTR_F510_00_Rev2_0 Date of release / Yayim tarihi: 19-09-2012 Author / Yazar: Filiz Sezer
Page / Sayfa: 7 / 16



9 socket outlet

Teknik Rapor Numarası.:S-1256-2258-02 HK

emitel TR, MTK Sitesi 5746/13 Sok. No:12 Camdibi Bornova 35090 Izmir / Turkiye
Tel.: +90 (232) 433 3190 Fax: +90 (232) 433 3290

emTR_F510_00_Rev2_0 Date of release / Yayim tarihi: 19-09-2012 Author / Yazar: Filiz Sezer
Page / Sayfa: 8 / 16



6 socket outlet

Teknik Rapor Numarası.:S-1256-2258-02 HK

emitel TR, MTK Sitesi 5746/13 Sok. No:12 Camdibi Bornova 35090 Izmir / Turkiye
Tel.: +90 (232) 433 3190 Fax: +90 (232) 433 3290

emTR_F510_00_Rev2_0 Date of release / Yayim tarihi: 19-09-2012 Author / Yazar: Filiz Sezer
Page / Sayfa: 9 / 16



3 socket outlet

Teknik Rapor Numarası.:S-1256-2258-02 HK

emitel TR, MTK Sitesi 5746/13 Sok. No:12 Camdibi Bornova 35090 Izmir / Turkiye
Tel.: +90 (232) 433 3190 Fax: +90 (232) 433 3290

emTR_F510_00_Rev2_0 Date of release / Yayim tarihi: 19-09-2012 Author / Yazar: Filiz Sezer
Page / Sayfa: 10 / 16

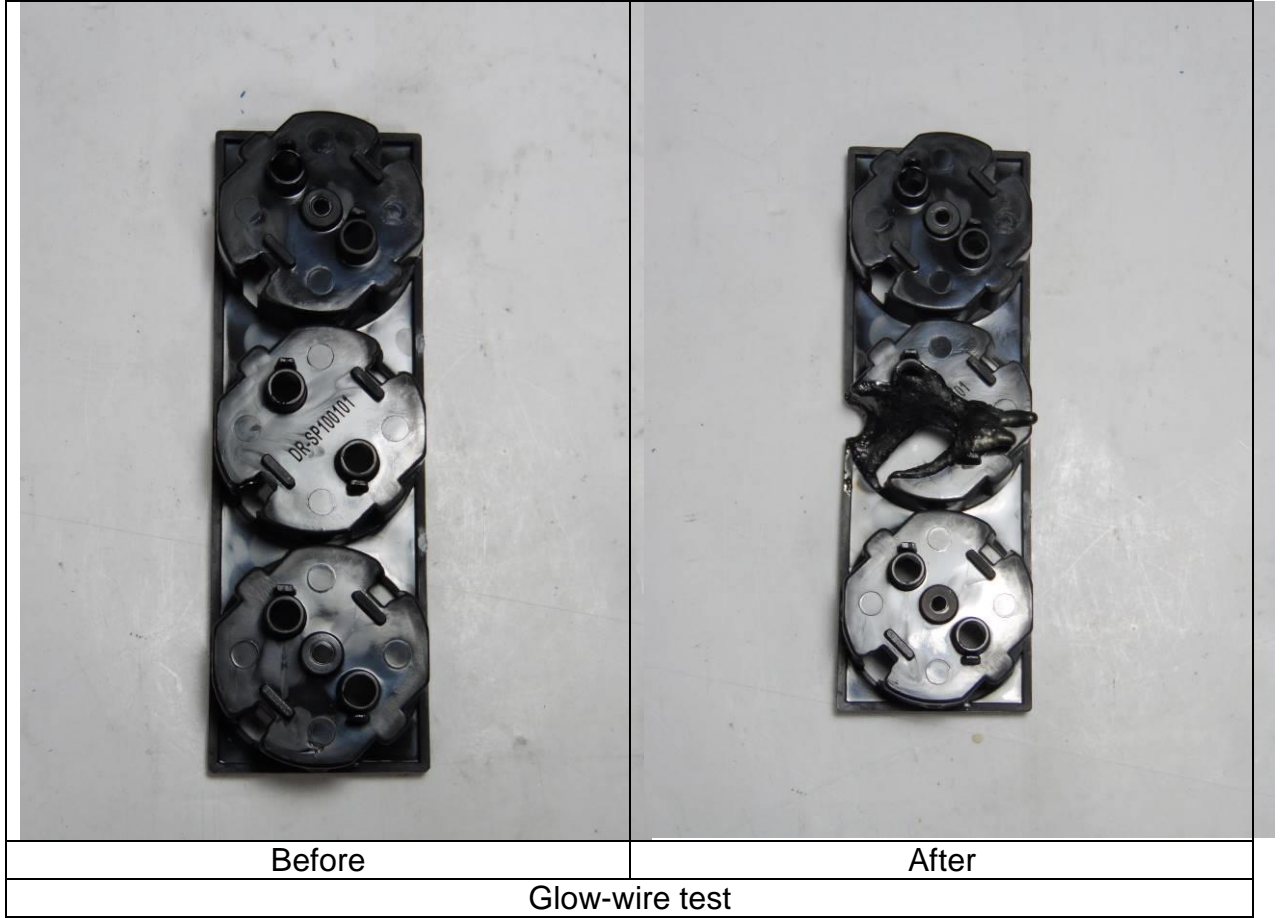


Circuit breakers

Teknik Rapor Numarası.:S-1256-2258-02 HK

emitel TR, MTK Sitesi 5746/13 Sok. No:12 Camdibi Bornova 35090 Izmir / Turkiye
Tel.: +90 (232) 433 3190 Fax: +90 (232) 433 3290

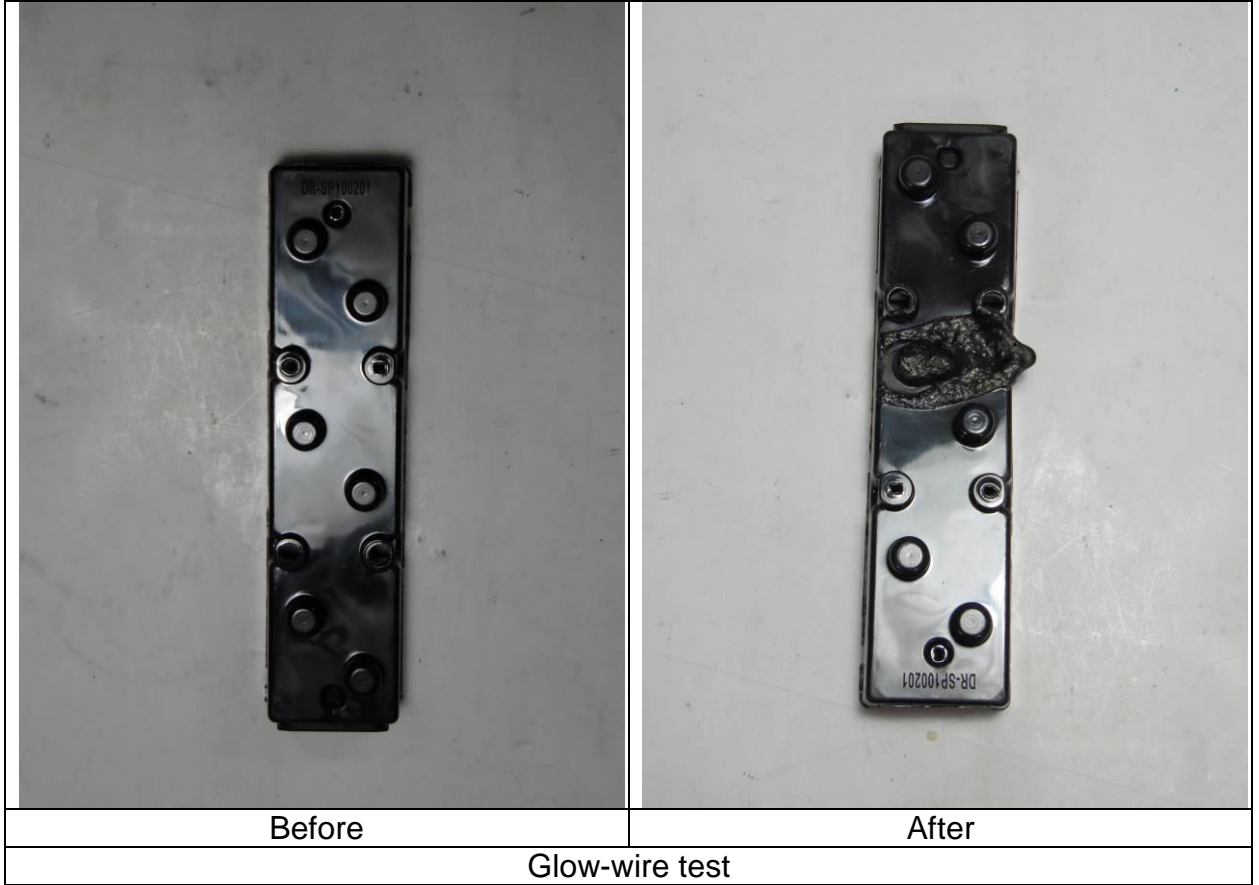
emTR_F510_00_Rev2_0 Date of release / Yayim tarihi: 19-09-2012 Author / Yazar: Filiz Sezer
Page / Sayfa: 11 / 16



Teknik Rapor Numarası.:S-1256-2258-02 HK

emitel TR, MTK Sitesi 5746/13 Sok. No:12 Camdibi Bornova 35090 Izmir / Turkiye
Tel.: +90 (232) 433 3190 Fax: +90 (232) 433 3290

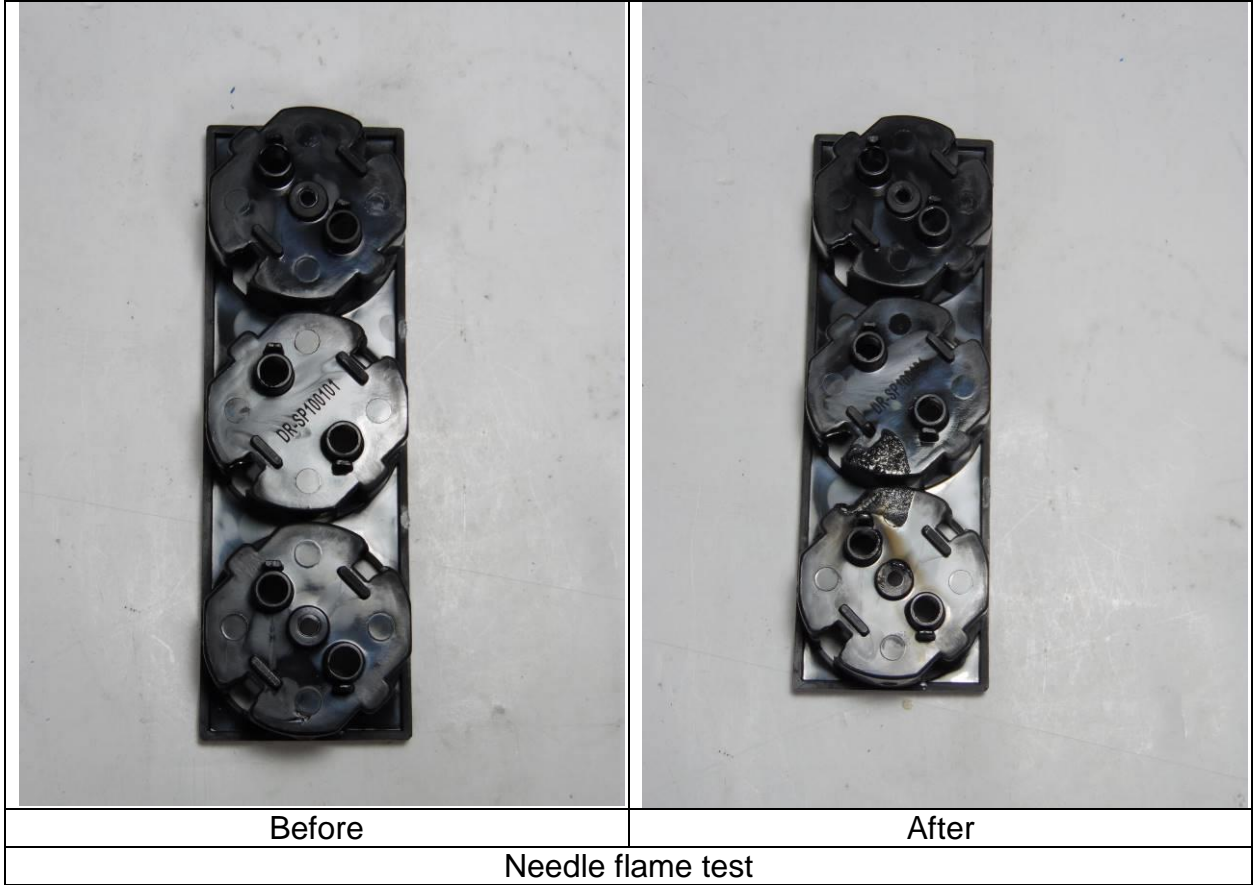
emTR_F510_00_Rev2_0 Date of release / Yayim tarihi: 19-09-2012 Author / Yazar: Filiz Sezer
Page / Sayfa: 12 / 16



Teknik Rapor Numarası.:S-1256-2258-02 HK

emitel TR, MTK Sitesi 5746/13 Sok. No:12 Camdibi Bornova 35090 Izmir / Turkiye
Tel.: +90 (232) 433 3190 Fax: +90 (232) 433 3290

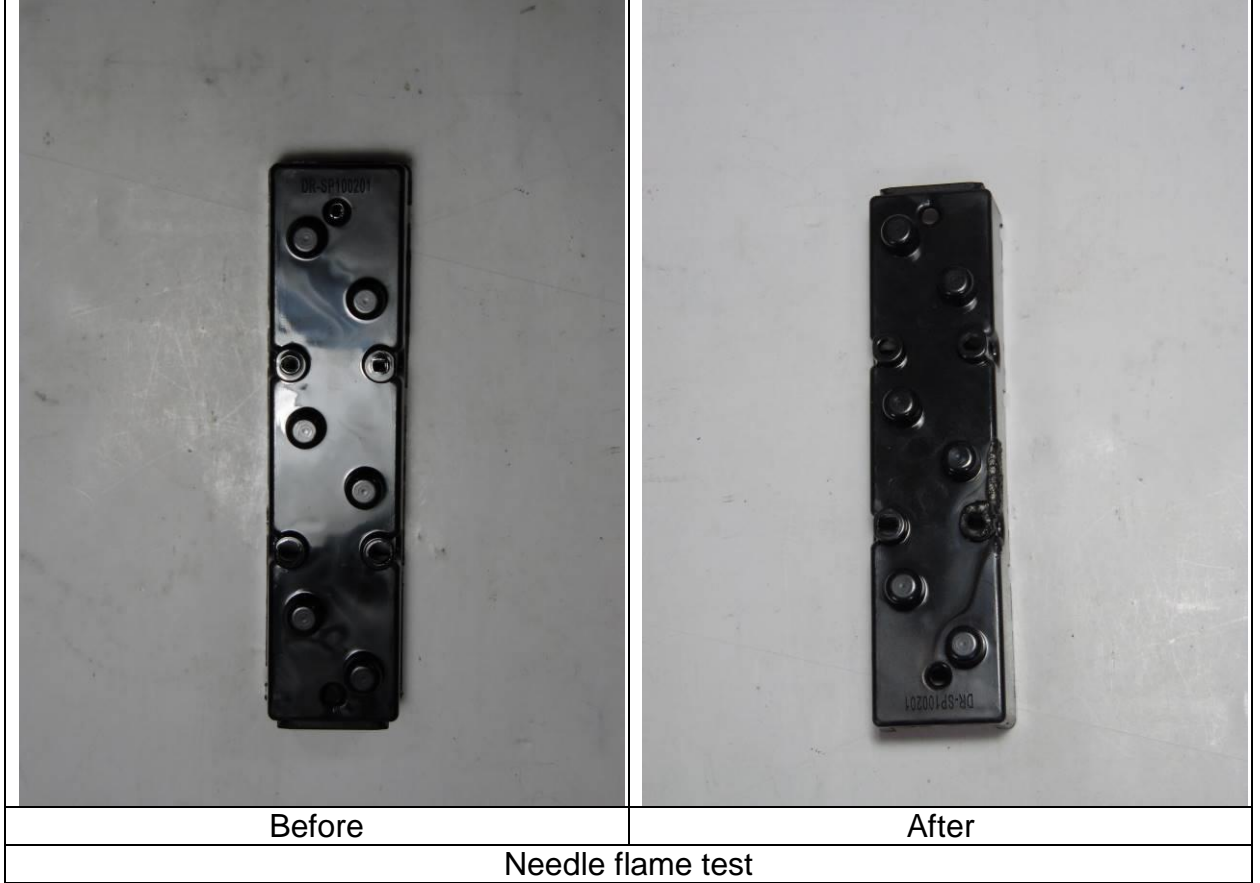
emTR_F510_00_Rev2_0 Date of release / Yayim tarihi: 19-09-2012 Author / Yazar: Filiz Sezer
Page / Sayfa: 13 / 16



Teknik Rapor Numarası.:S-1256-2258-02 HK

emitel TR, MTK Sitesi 5746/13 Sok. No:12 Camdibi Bornova 35090 Izmir / Turkiye
Tel.: +90 (232) 433 3190 Fax: +90 (232) 433 3290

emTR_F510_00_Rev2_0 Date of release / Yayim tarihi: 19-09-2012 Author / Yazar: Filiz Sezer
Page / Sayfa: 14 / 16



Teknik Rapor Numarası.:S-1256-2258-02 HK

emitel TR, MTK Sitesi 5746/13 Sok. No:12 Camdibi Bornova 35090 Izmir / Turkiye
Tel.: +90 (232) 433 3190 Fax: +90 (232) 433 3290

emTR_F510_00_Rev2_0 Date of release / Yayim tarihi: 19-09-2012 Author / Yazar: Filiz Sezer
Page / Sayfa: 15 / 16

ATTACHMENT 2: Equipment of measurements

Equipment No	Kind of equipment	Model Type	Manufacturer	Last Cal Date	Next Cal Date	Last Ver Date	Next Ver Date	Test Clause
03-03/30-06-003	AC current source	0-100A	Emelsan	--	---	--	--	During all electrical tests
03-03/30-16-001	CE MultiTester	MI2094	METREL	22.05.2018	22.05.2019	--	--	17.1;17.2
03-03/45-14-001	Climatic test chamber	--	ER-VEY (DIXELL)	02.02.2018	02.02.2019	--	--	16.3
03-03/32-18-003	WATTMETRE	PW 3335	HIOKI	8.6.2018	8.6.2019	--	--	19.3
03-03/30-17-001	Datalogger	LR 8400-20	HIOKI	22.07.2017	22.07.2018	--	--	19.3
--	Glow-wire test device	GW-2008	EMS	9.10.2014	9.10.2019	--	--	28.1.1
--	Needle flame test device	FT-2008	EMS	--	--	--	--	--
03-03/50-06-023	Ball pressure apparatus	Ball pressure apparatus	---	20.9.2017	20.9.2018	--	--	25.2
03-03/30-08-002	Heat oven	FN 120	Nüve	20.10.2017	20.10.2018	--	--	25.2

Teknik Rapor Numarası.:S-1256-2258-02 HK

emitel TR, MTK Sitesi 5746/13 Sok. No:12 Camdibi Bornova 35090 Izmir / Turkiye
Tel.: +90 (232) 433 3190 Fax: +90 (232) 433 3290

emTR_F510_00_Rev2_0 Date of release / Yayim tarihi: 19-09-2012 Author / Yazar: Filiz Sezer
Page / Sayfa: 16 / 16